



PREPARED BY  
**DIVISION OF REAL PROPERTY TAX SERVICES**  
 ERIE COUNTY, NEW YORK

**NOTES**  
 THIS MAP WAS PREPARED FOR TAX PURPOSES ONLY AND IS NOT TO BE REPRODUCED OR USED FOR SURVEYING OR CONVEYANCING.  
 MAP PREVIOUSLY CONVERTED TO AUTOCAD DIGITAL FORMAT BY ANALYTICAL SURVEYS INC. IN COOPERATION WITH WEILER MAPPING INC. (1999)

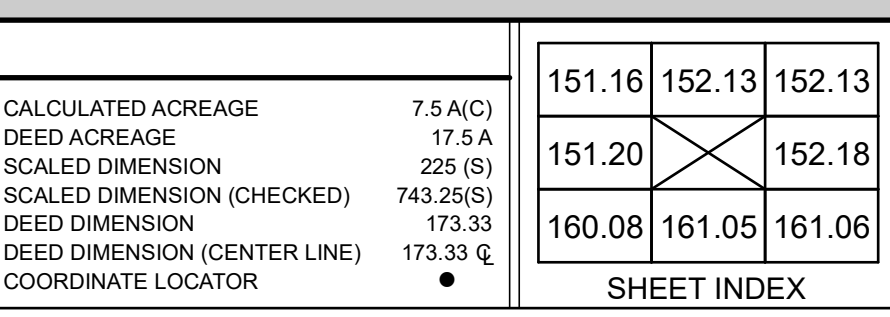
REVISION TABLE		CHANGES OR ADDITIONS
DATE	MADE BY	
1/11/2024	LMO	BLK. 1, 8 & 9 INTO 8.1
3/22/2015	ARG	BLK. 1, 2, 111, 2, 121 INTO 16
9/18/2014	ARG	BLK. 1, 15.1 RESTORE MISSING PORTION
3/5/2012	JCS	BLK. 1, 2, 12 & 2, 2 INTO 2, 121
4/24/2007	MJM	BLK. 1, 15.1 - ADDED. PC TO 13.15 - ROW CHG

SPECIAL DISTRICTS	
SCHOOL	ORCHARD PARK CENTRAL SCHOOL DISTRICT
FIRE	ORCHARD PARK FIRE DISTRICT
SEWER	ERIE COUNTY SEWER DISTRICT NO 3
WATER	ORCHARD PARK WATER DISTRICT NO 6
	ORCHARD PARK WATER DISTRICT NO 17

LEGEND	
PROPERTY LINE	ORIGINAL SUBLOT LINE
RAILROAD	STREAM OR DITCH
ROAD OR RAILROAD BNDY	COUNTY LINE
TOWN LINE	VILLAGE LINE
GREAT LOT LINE	SCHOOL DISTRICT LINE
WATER DISTRICT LINE	SEWER DISTRICT LINE
FIRE DISTRICT LINE	DENOTES COMMON OWNER
TAX MAP BLOCK NO.	FILED PLAN LOT NO.
GREAT LOT NO.	

CALCULATED ACREAGE	
DEED ACREAGE	7.5 A(C)
SCALED DIMENSION (CHECKED)	17.5 A(C)
DEED DIMENSION (CENTER LINE)	743.25(S)
COORDINATE LOCATOR	173.33 Q

SHEET INDEX	
151.16	152.13
151.20	152.18
160.08	161.05
161.05	161.06



TAX MAP  
**TOWN OF ORCHARD PARK**  
 ERIE COUNTY, NEW YORK  
 GRAPHIC SCALE  
 1" = 100'  
 MAP DATE: 8/22/2024

152.17  
 TOWNSHIP 10  
 RANGE 7